

# WOOD CHIPS



Northwest Indiana Woodworkers Association

Volume 18, Issue 12 December 2014

## President's Corner

Members this is my last note to you holding office for this fine Club. I would like to thank all of you for having the privilege to stand before you every month and guide our Club. I have always felt well supported from the moment I had the notion to run for president and through the years. I want to thank Jim Schuster who gave me the Club knowledge and guidance and the kick in the pants to go for the presidency, Joe McDaniels for his strength to see things clearly and gentle smile of approval. Phil Malavolta, you live your faith and always has time to help. Dick Sader, you always caught what I threw over my shoulder with a smile and carried out the task. Fred Bogwill thanks for sharing your knowledge at meetings. Fred Baginski I thank you for BBQing for our Picnics even though you don't raise your hand ;) Mike Clark, thanks, for asking if we could have a longer break at meetings. It works! There is nothing better than woodworkers hanging out with woodworkers. I thank my Committee Members: John Hunter, Norm Johnson, Frank Schmidt, Frank Berzinis, Ken Garbe, Duane Bomba, Mike Clark, Jon Robbins, Phil Malavolta, Wally Richardson, John Arvidson, Charlie Norman, Al Kalos, Ronnie Rogers, Joe McDaniels, Max Hernick, Denny McCoolle, Dick Sader Ken and Lois Woolard for their hard work. I thank everyone that has volunteered through the years. Lastly, I want to thank the people that I have worked with and have worked very hard to make 2014 a success, The Executive Board. All of you are the best!

You have elected a fine Executive Board: President – Kevin Sturgeon, Vice-president- Mike Clark, Secretary- John Hunter, and Treasurer – Ron Benson.

Let's make fine sawdust. See you at the Christmas Party,

Marcia Lichnerowicz  
President

## CHRISTMAS PARTY AND INSTALLATION

This is a last reminder for the NIWA Christmas Party. It will be at Hidden Lake Park on the Thursday before Christmas, Dec 18. We will **begin dinner at 6pm**, an hour earlier than our normal meetings.

Bring a dish to pass and a handmade gift if you can for the spouses. The club will provide the meat (Italian Beef, chicken, and Mostaccioli) rolls, coffee, water, ice, plates, plasticware, salt, pepper, sugar.

We look forward to seeing you.

Mike Clark & Jon Robbins

## SHOW AND TELL



**Frank Berzinis**



**Bill Schoech**



**Max Hernick**



**Ron Benson**



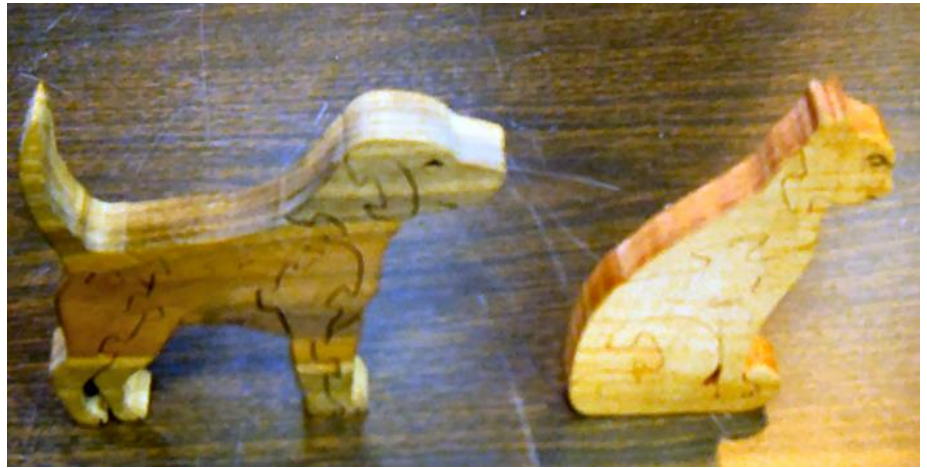
Jesse Day



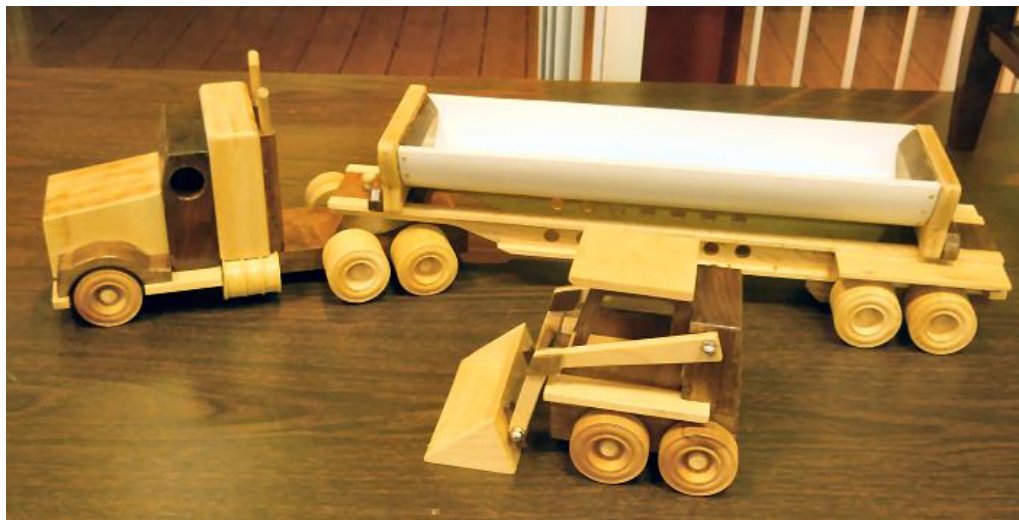
Jeff SnellGrove



Joe McDaniel



Dick Sader



Leon Kozlowski

## TOYS FOR KIDS

Once again the club met its goal and made over 1,000 toys for needy children! Great job everyone and thank you for all your hard work.





A special thank you to those members that made toys this year, without you we would not have a Toy Program and a lot of kids would not be getting a Christmas gift. Those members were:

Ron Benson  
 Phil Malavolta  
 Bill Schoech  
 Frank Berzinis  
 Norm Johnson

Jim Jones  
 Max Hernick  
 Robert Jancich  
 Jon Robbins  
 John Hunter

Marcia Lichnerowicz  
 Chuck Norrman  
 Denny McCoole  
 Kevin Sturgeon

### **ITEMS FOR SALE**

**If you have any wood working related items that you wish to sell through the newsletter please contact John Hunter [john.b.hunter@frontier.com](mailto:john.b.hunter@frontier.com) Include a description and the price you are selling them for, also how you may be contacted.**

**If you are looking for a tool that another member would like to sell you can place a wanted ad in the newsletter, just contact John Hunter at [john.b.hunter@frontier.com](mailto:john.b.hunter@frontier.com)**

## **CALENDAR OF EVENTS**

**2014**

December 18<sup>th</sup> Membership Meeting at Hidden Lake 6:00 PM Christmas Party,  
Installation and Awards

## **CALENDAR OF EVENTS**

**2015**

January 12<sup>th</sup> Executive Board Meeting 7 PM at 2949 Willowcreek Rd, Portage

January 20<sup>th</sup> Committees Meeting at 2949 Willowcreek Rd, Portage 7:00 PM

January 22<sup>nd</sup> Membership Meeting at 208 South Linda Street, Hobart IN 7:00 PM  
Silent Auction

February 17<sup>th</sup> Committees Meeting at 2949 Willowcreek Rd, Portage 7:00 PM

February 26<sup>th</sup> Membership Meeting at 208 South Linda Street, Hobart IN 7:00 PM  
Shop Jigs

March 17<sup>th</sup> Committees Meeting at 2949 Willowcreek Rd, Portage 7:00 PM

March 26<sup>th</sup> Membership Meeting at 208 South Linda Street, Hobart IN 7:00 PM

April 10<sup>th</sup> Setup Club Booth for Duneland Caver's Show

April 11<sup>th</sup> & 12<sup>th</sup> Club Booth at Duneland Caver's Show

April 6<sup>th</sup> Executive Board Meeting 7 PM at 2949 Willowcreek Rd, Portage

April 21<sup>st</sup> Committees Meeting at 2949 Willowcreek Rd, Portage 7:00 PM

April 23<sup>rd</sup> Membership Meeting at 208 South Linda Street, Hobart IN 7:00 PM  
2 x 4 Challenge

May 19<sup>th</sup> Committees Meeting at 2949 Willowcreek Rd, Portage 7:00 PM

May 28<sup>th</sup> Membership Meeting at Hidden Lake 7:00 PM

June 16<sup>th</sup> Committees Meeting at 2949 Willowcreek Rd, Portage 7:00 PM

June 25<sup>th</sup> Membership Meeting at Hidden Lake 7:00 PM

July 13<sup>th</sup> Executive Board Meeting 7 PM at 2949 Willowcreek Rd, Portage

July 21<sup>st</sup> Committees Meeting at 2949 Willowcreek Rd, Portage 7:00 PM

July 23<sup>rd</sup> Membership Meeting at Hidden at Hidden Lake 7:00 PM

August 6<sup>th</sup> Set Up Club Booth at Lake County Fair 9 PM

August 7<sup>th</sup> – 10<sup>th</sup> Club Booth at Lake County Fair 10 AM – 10 PM

August 18<sup>th</sup> Committees Meeting at 2949 Willowcreek Rd, Portage 7:00 PM

August 22<sup>nd</sup> Club Picnic at Hidden Lake Park 12 Noon

August 27<sup>th</sup> Membership Meeting at Hidden Lake 7:00 PM

September 15<sup>th</sup> Committees Meeting at 2949 Willowcreek Rd, Portage 7:00 PM

September 24<sup>th</sup> Membership Meeting at Hidden Lake 7:00 PM

October 5<sup>th</sup> Executive Board Meeting at 7 PM at 2949 Willowcreek Rd, Portage

October 20<sup>th</sup> Committees Meeting at 2949 Willowcreek Rd, Portage 7:00 PM

October 22<sup>nd</sup> Membership Meeting at Hidden Lake 7:00 PM

November 17<sup>th</sup> Committees Meeting at 7:00 PM

November 19<sup>th</sup> Membership Meeting at Hidden Lake 7:00 PM Toy Program

December 15<sup>th</sup> Committees Meeting at 2949 Willowcreek Rd, Portage 7:00 PM  
December 17<sup>th</sup> Membership Meeting at Hidden Lake 6:00 PM Christmas Party,  
Installation and Awards

## **Bob Flexner's Finishing Tips**

<http://www.thefinishingstore.com/>

### **Tip: Wax Polish for Added Shine**

If you are applying paste wax as a polish on top of a finish, you will always get a little better result with two coats. Let the first coat dry for at least a couple of hours, or overnight, before applying the second.

You would think that one coat should be sufficient, and it is if all you want is scratch resistance and a little added shine. But my experience is that two coats, well buffed off with a dry cloth, always looks a little better and more even.

If you want to dull the surface simultaneously with the wax application, you can use #0000 steel wool to apply the first coat of wax. You could also do this in two steps: dull with steel wool, then apply the wax with a cloth. Using steel wool for the second coat accomplishes little more than removing the first coat while you're applying the second.

If you don't want to dull the surface, use a cloth to apply the wax—and never use steel wool to buff off the wax unless you want to remove it.

By the way, contrary to an often-repeated suggestion (especially for shellac finishes), such a thin coat of wax adds nothing to water protection. There will be beading and run off on vertical surfaces, but water sitting on a horizontal surface will penetrate the wax almost immediately. It will be the finish underneath that provides the protection against water getting into the wood.

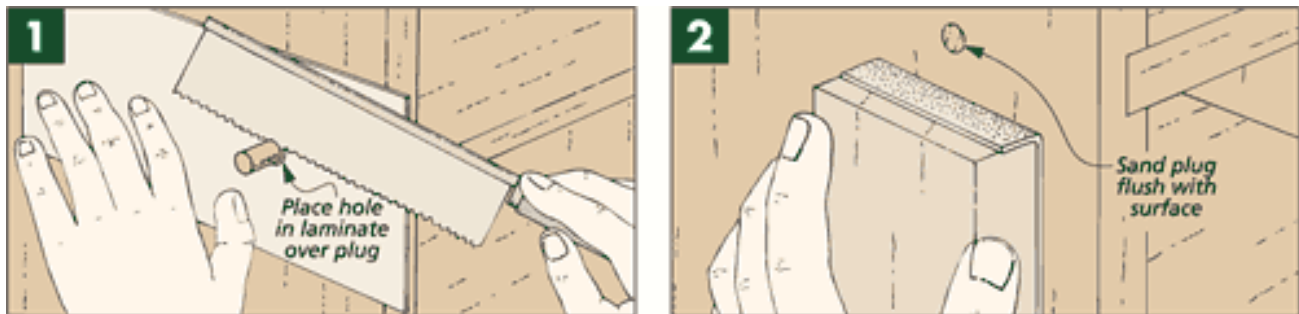


## Flush Cut Shield

Whenever I use screws to assemble a project, I hide them under wood plugs. Cutting the plugs and gluing them in place is the easy part of the job. The bigger challenge comes once the glue dries — trimming the plugs flush to the surface.

For me, this is a two-step process. First, I use a small back saw to trim off the bulk of the protruding plug. Then I sand or plane the remaining portion flush to the surface. But my lack of care with the back saw often led to problems. If I tried to cut the plug too close, I would scratch or gouge the surface, making more work for myself.

But as is usually the case, a small problem had a simple solution. I dug up a scrap of plastic laminate and made a flush cut shield. The laminate shield has a hole drilled through it slightly larger than the diameter of the plugs. You place the shield over the plug flush to the surface and then saw away without worry (*Figure 1*). The thin shield allows you to give the plug a very close trim and all that's needed to finish the job is a little sanding (*Figure 2*).



For more helpful project tips, techniques, and plans, visit [Plansnow.com](http://Plansnow.com).

Good Woodworking,

Ted Raife

Online Editor, *Woodsmith*