

WOOD CHIPS



Northwest Indiana Woodworkers Association

Volume 17, Issue 2 February 2013

President's Corner

Greetings Woodworkers, Have you noticed that the days are getting longer? This means that soon we can spend time in the shop. Until then we can think about all the projects we want to make and watch the sale papers for tools. We never have enough tools or room in the shop to store them. Hmmmm. Perhaps a dream about that perfect shop with all the goodies will keep us going until spring. Then we enter our own shop, look around, and realize that yes we have our own perfect shop. Keep making woodworking dreams come true.

NEW Historians Wally Richardson and John Arvidson as new historians will be collecting club articles, photos, and information about our fine club and making it easier for members to access and enjoy. Thanks guys!

Toy Program We are in need of chairman for the toy program. This is a very important. The Kids Need Us! If you are making toys that need wheels and pegs we have them. We need volunteers to paint toys. We have paint and brushes. I know it's early, but as we all know, sometimes things come up so we need to start thinking about this.

DON'T FORGET February's program is Shop Jigs. Is there a jig that really made your project go smoother? If you haven't shown it to the membership at a previous shop jig program, bring it in. It's time to tell the members how it helped you and how the jig is made. This is always a very interesting program.

We have 2 tables at the 37th Annual Duneland Woodcarvers Show on April 13 from 10am to 5pm and April 14 from 10am to 4pm. Set up will be on April 12 time to be announced. Take down is after the show closes on April 14. We need volunteers to demonstrate scroll sawing, talk about our fine Club, display items at the booth, set up and take down. Tables are provided. The Duneland Woodcarvers put on a fine show and this is a great opportunity to meet members from other clubs and learn new woodworking skills.

See you at the meeting!

Your president, Marcia Lichnerowicz

SHOW AND TELL



Gene Davis



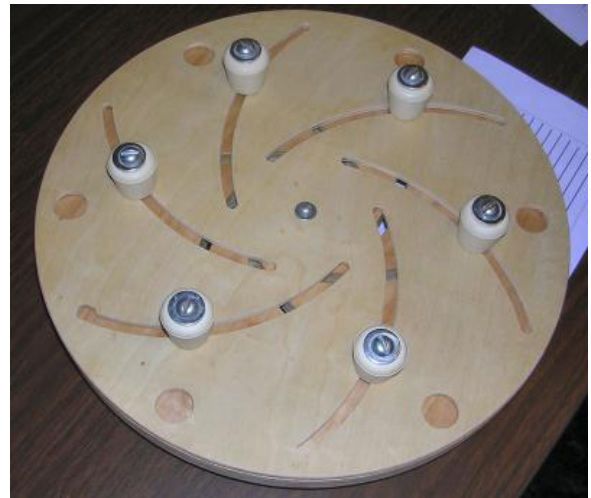
Phil Malavolta



Joe Mazrimas



Joe McDaniel



Jim Jones



CJ Compton



Joe McDaniel



Denny McCoole



Max Hernick



Frank Berzinis



John Hunter



Jon Robbins



Rodney Foster

ITEMS FOR SALE

If you have any wood working related items that you wish to sell through the newsletter please contact John Hunter john.b.hunter@frontier.com Include a description and the price you are selling them for, also how you may be contacted.

If you are looking for a tool that another member would like to sell you can place a wanted ad in the newsletter, just contact John Hunter at john.b.hunter@frontier.com

CALENDAR OF EVENTS

2013

- February 28th Membership Meeting at Hidden Lake 7:00 PM Shop Jigs
- March 19th Committees Meeting at Marcie's home 7:00 PM
- March 28th Membership Meeting at Hidden Lake 7:00 PM
- April 1st Executive Board Meeting at Portage Library 7 PM
- April 13th & 14th Duneland Carvers Show at Woodland Park
- April 16th Committees Meeting at Marcie's home 7:00 PM
- April 25th Membership Meeting at Hidden Lake 7:00 PM 2 x 4 Challenge
- May 21st Committees Meeting at Marcie's home 7:00 PM
- May 23rd Membership Meeting at Hidden Lake 7:00 PM
- June 18th Committees Meeting at Marcie's home 7:00 PM
- June 27th Membership Meeting at Hidden Lake 7:00 PM
- July 1st Executive Board Meeting at Portage Library 7 PM
- July 16th Committees Meeting at Marcie's home 7:00 PM
- July 25th Membership Meeting at Hidden Lake 7:00 PM
- August 1st Set Up Club Booth at Lake County Fair 9 PM
- August 2nd – 5th Club Booth at Lake County Fair 10 AM – 10 PM
- August 20th Committees Meeting at Marcie's home 7:00 PM
- August 22nd Membership Meeting at Hidden Lake 7:00 PM

August 25th Club Picnic at Hidden Lake Park 12 Noon
September 17th Committees Meeting at Marcie's home 7:00 PM
September 26th Membership Meeting at Hidden Lake 7:00 PM
October 7th Executive Board Meeting at Portage Library 7 PM
October 15th Committees Meeting at Marcie's home 7:00 PM
October 24th Membership Meeting at Hidden Lake 7:00 PM
November 19th Committees Meeting at Marcie's home 7:00 PM
November 14th Membership Meeting at Hidden Lake 7:00 PM Toy Program
December 17th Committees Meeting at Marcie's home 7:00 PM
December 19th Membership Meeting at Hidden Lake 6:00 PM Christmas Party,
Installation and Awards

Bob Flexner's Finishing Tips

<http://www.thefinishingstore.com/>

TIP: Strain Water-Based Finish

Posted on December 6th, 2010 By [Bob Flexner](#) [No comments](#)

It's always a good idea to strain a finish before brushing or spraying it to remove dirt and other unwanted particles. It's especially important to strain water-based finishes because small bits of finish often solidify in the can, and rust that forms around the lip of the can may fall into the finish.

Commercial strainers are widely available wherever paints and finishes are sold. These strainers are much easier to use than any homemade cloth system you may think up.



Strain Water-Based Finish

Straining always involves using a separate container, which can be the spray-gun cup itself if you're spraying, or a jar or plastic container if you're brushing. It's best to brush from a separate container anyway, in order not to introduce dust and dirt your brush may pick up back into your main supply.

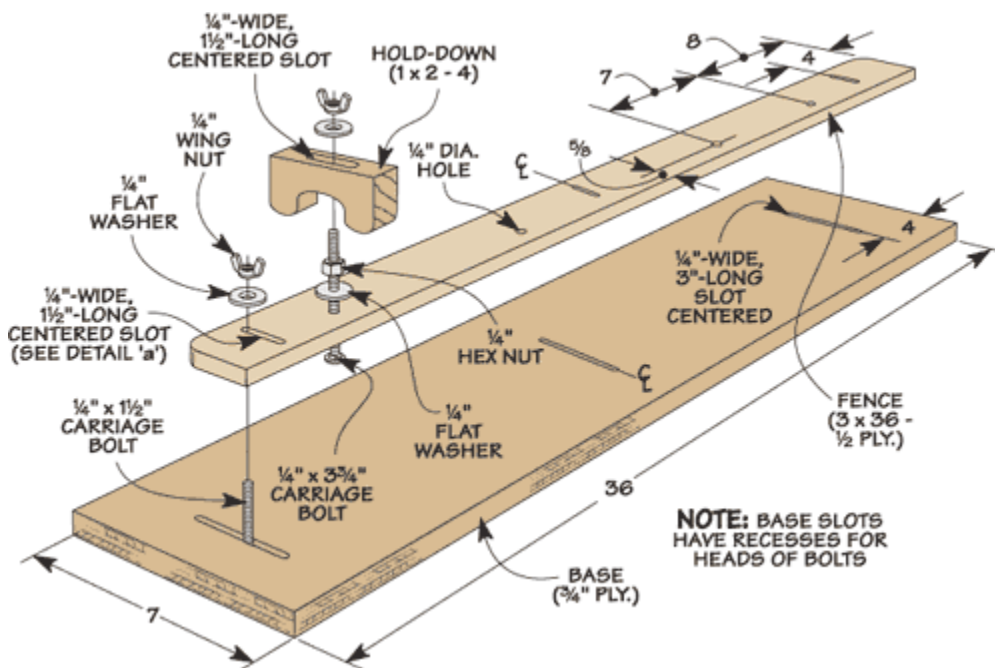
Adjustable Taper Jig

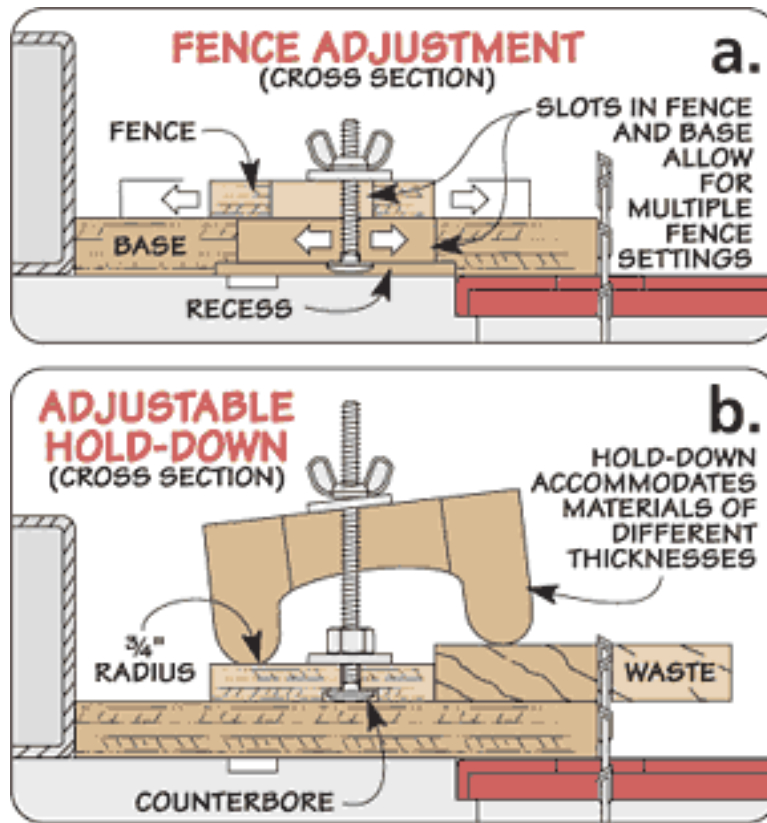


I recently needed to cut some tapered pieces for a project and didn't want to invest in a manufactured jig. So I built the simple jig you see in the photo above.

It doesn't take much material to build the jig. You probably have just about everything you'll need lying around your shop.

Best of all, it's accurate and can accommodate a wide variety of workpiece sizes. It also works great for ripping a straight edge on rough lumber.





The base of the jig is a piece of $\frac{3}{4}$ " plywood with three long slots used to attach an adjustable fence. Each slot is recessed on the bottom so the head of a carriage bolt sits out of the way (*see detail 'a'*).

An adjustable $\frac{1}{2}$ " plywood fence sits on top of the base. It has slots to match the slots in the base for adjusting the angle of the taper. And four holes in the fence accept $\frac{1}{4}$ " carriage bolts for the hold-downs.

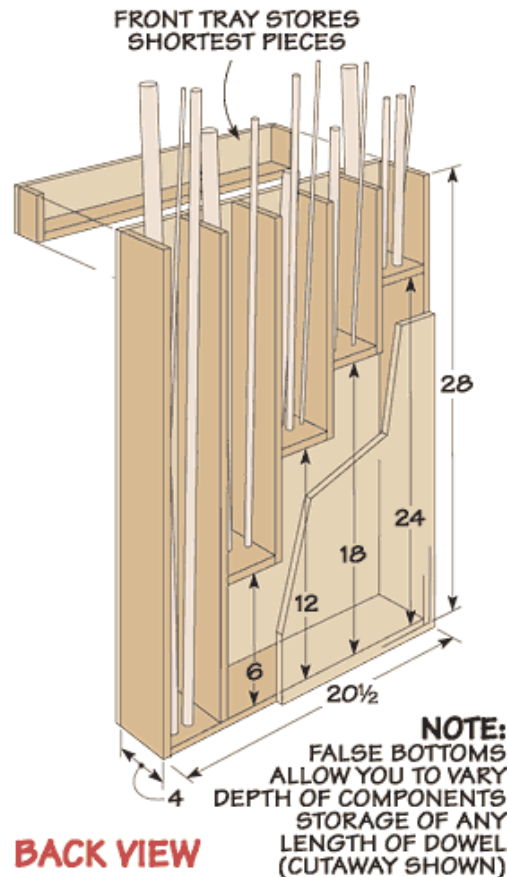
I made the four hold-downs from 1"-thick hardwood (*see detail 'b'*). A slot at the top allows you to quickly position and then tighten them down with a wing nut.

To use the taper jig, adjust the fence to the desired taper and lock it in place. Then swing the hold-downs over the workpiece and tighten the wing nuts. Finally, set the rip fence of the table saw so the blade lines up with the edge of the jig. Then simply push the sled along the fence. That's all it takes to cut perfect tapers everytime.

Good Woodworking,

Phil Huber
Online Editor, *ShopNotes*

Dowel Storage Box



I had a problem storing the leftover dowel pieces. The shorter pieces were always hard to find and never seemed to get used. To solve this problem, I built the dowel storage box you see in the drawing. It lets me easily store a wide range of dowel lengths. That way, I can find even the smallest pieces quickly.

This storage box lets me easily store a wide range of dowel lengths. That way, I can find even the smallest pieces quickly.

The storage box consists of five compartments. Four of the compartments have false bottoms so each compartment is six inches shorter than the one next to it. This stair-step arrangement allows me to store all lengths of pieces. And a shallow tray in front lets me store the pieces that are too short to fit in any of the other bins.

New dowels go in the deepest bin. Then, as they're cut off, they're moved to the appropriate bin. Now I can easily find and make use of all the dowels I have on hand.

Good Woodworking,

Phil Huber
Online Editor, *ShopNotes*