

# WOOD CHIPS



Northwest Indiana Woodworkers Association

Volume 24, Issue 11 November 2019

## President's Corner

**Greetings Fellow Woodworkers**, First things first, Happy Veteran's Day, Thank You to all that served so we can enjoy our freedoms!

I have to apologize to any member that showed up at Schererville Parks and Recreation Holiday Craft Show on November 2<sup>nd</sup>. It was decided to cancel at the last minute due to the weather. We can try this show next year if we can get an indoor spot.

At the October meeting we held the nominations for the 2020 officers. The nominees are as follows:

PRESIDENT – KEVIN STURGEON

VICE PRESIDENT – JON ROBBINS

TREASURER – RON BENSON

SECRETARY - JOHN HUNTER

Additional nominations will be held prior to the election at the November meeting. The club is also in need to some committee chairpersons:

**Message from Santa:** This meeting we will be distributing the Toys For Kids. If you listed a charitable organization, it will be your responsibility to get the items delivered to your organization(s). Please invite a representative from the organization that you submitted, to the club meeting, we would like to hear from them how this program has helped. Have any spare boxes? Please bring some to help package these toys for delivery.

Our EDUCATIONAL RAFFLE DRAWING is at the November meeting. Bring in your ticket stubs. We still have tickets if you want to make any last minute ticket purchases. This money will help our club provide for our Needy Kids Toy Program this year at Christmas as well as educational programs in the future. Thanks to all for helping make our raffle a success.

Christmas Party is coming up on December 19th, 2019 (a week before our normal meeting and an hour earlier than our normal meeting) at 6 PM and we will have a sign-up sheet for our members and guest. The dinner will be buffet style with the club providing the meat and drinks. Members are asked to bring a dish to share. We always have wonderful selection of foods. We are in need of some handmade gifts for or ladies. Please bring a wrapped gift or two for the ladies that support us and participate in our craft. We will have a sign up sheet so we will know how many gifts are coming.

Enjoy this weather and Don't let your tools rust!

Your President,

Kevin Sturgeon

## SHOW AND TELL



Dick Sader



Ken Woolard



Max Hernick



John Hunter



Jeff Snellgrove



Bill Schoech



Gene Davis

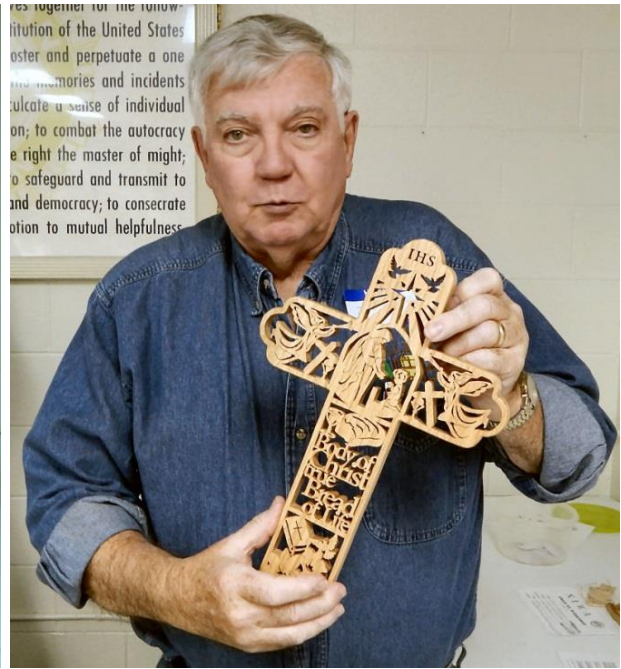


Tim Compton





Steve Bennett



Jon Robbins



Julie Sturgeon



Kevin Sturgeon

## PROGRAM



Member Norm Johnson demoed making 3D cutting boards.

## ITEMS FOR SALE

**If you have any wood working related items that you wish to sell through the newsletter please contact John Hunter [john.b.hunter@frontier.com](mailto:john.b.hunter@frontier.com) Include a description and the price you are selling them for, also how you may be contacted.**

**If you are looking for a tool that another member would like to sell you can place a wanted ad in the newsletter, just contact John Hunter at [john.b.hunter@frontier.com](mailto:john.b.hunter@frontier.com)**

## 2019

November 21<sup>st</sup> Membership Meeting at 208 South Linda Street, Hobart IN 7:00  
PM Toy Program

December 16<sup>th</sup> Committees Meeting at 2949 Willowcreek Rd, Portage 7:00 PM

December 19<sup>th</sup> Membership Meeting at 208 South Linda Street, Hobart IN 6:00  
PM Christmas Party, Installation and Awards

## **Bob Flexner's Finishing Tips**

<http://www.thefinishingstore.com/>

### **Conversion Varnish Application Issues**

Conversion varnish, also called catalyzed varnish, is the most protective and durable finish commonly available to amateurs and small shops. In industry it is often used on office furniture and kitchen cabinets.



The finish is supplied in two parts: the finish itself, and an acid catalyst that has to be added just before application to make the finish cure properly. Conversion varnish thins with xylene, toluene or a related solvent specified by the manufacturer.

You can usually find conversion varnish at distributors or stores that cater to professionals. The trade off for the added performance is greater application difficulty. The catalyst has to be added exactly as specified or problems will occur. Too much catalyst and an oily residue, called “bloom,” will develop on the surface, and the finish might crack. Too little catalyst and the finish won’t harden properly, and it may wrinkle when the next coat is applied.

Once the catalyst is added, you have a limited time specified by the manufacturer to use the finish or it will cure in the spray gun. You also have a limited time to complete the finishing so the coats bond well. As a result, if you’re doing any pore filling or glazing with slow-drying products, you may want to do these over a vinyl sealer and with vinyl washcoats between steps so you don’t exceed this window. Other sealers or finishes may cause wrinkling or cracking if you apply conversion varnish over them.

- The acid catalyst causes color shifts in many dye stains, so always use the manufacturer’s recommended stains.
- Due to the hardness attained, you shouldn’t apply more than about three coats of conversion varnish or the finish will crack – sometimes months later.



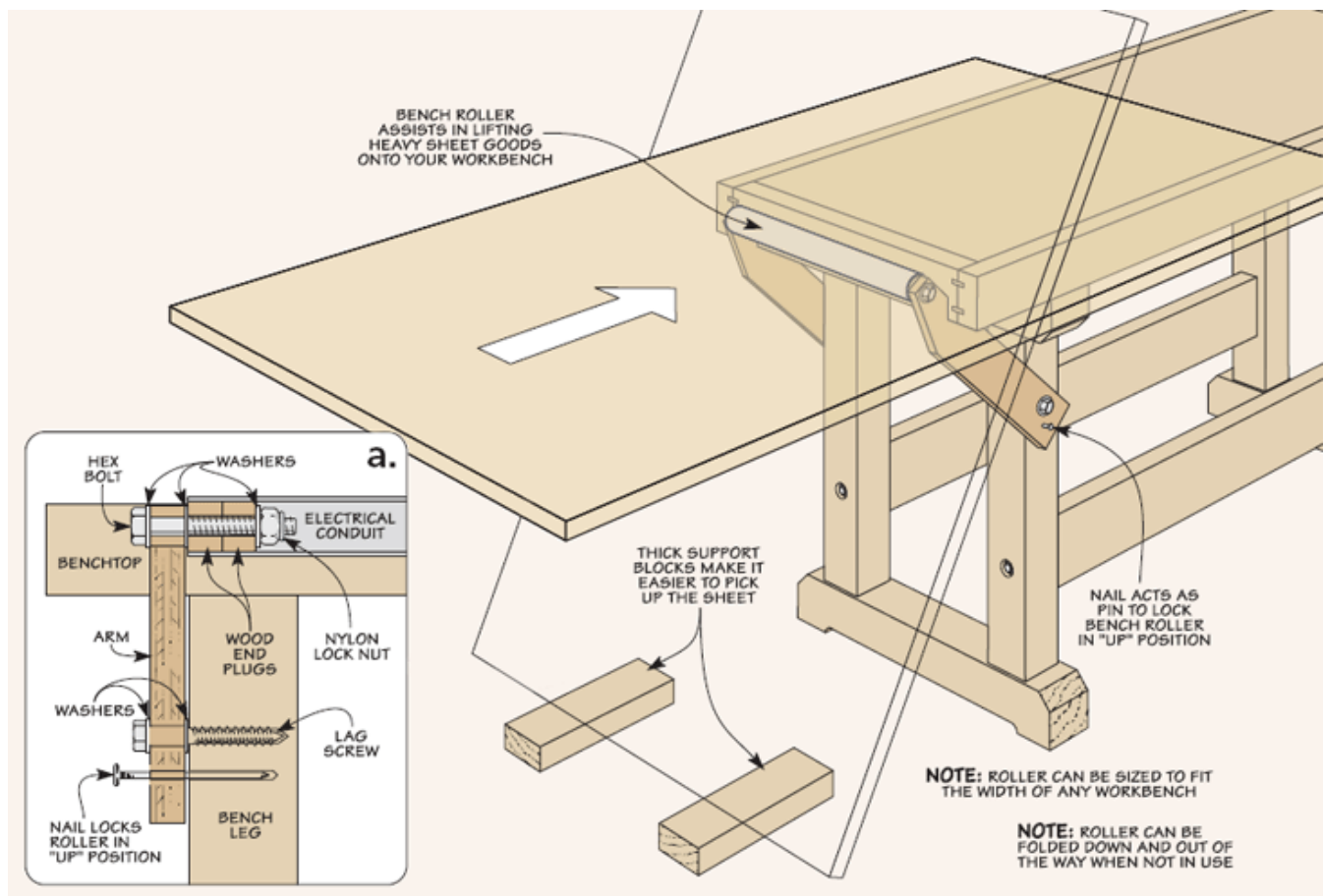
- The temperature should be kept in the upper 60s or higher for two days after application, or the finish may not cure properly.
- Repairs to conversion varnish are difficult to do well enough so the repair doesn't show.

When spraying, it's very important to work in a quality spray booth with good exhaust and use a proper NIOSH-approved respirator.

## Sheet Goods Bench Roller

Handling oversized material in the shop is always a challenge. It's often difficult to get a large sheet in position on my table saw. I find it easier if I can get the workpiece on my workbench first and then slide it over onto the table saw. The hardest part is lifting it up onto the top of the workbench.

To help me lift the sheet, I built a simple roller that attaches to the end of my workbench. This roller lets me place the material next to the bench and then easily tilt it up onto the top of the bench.



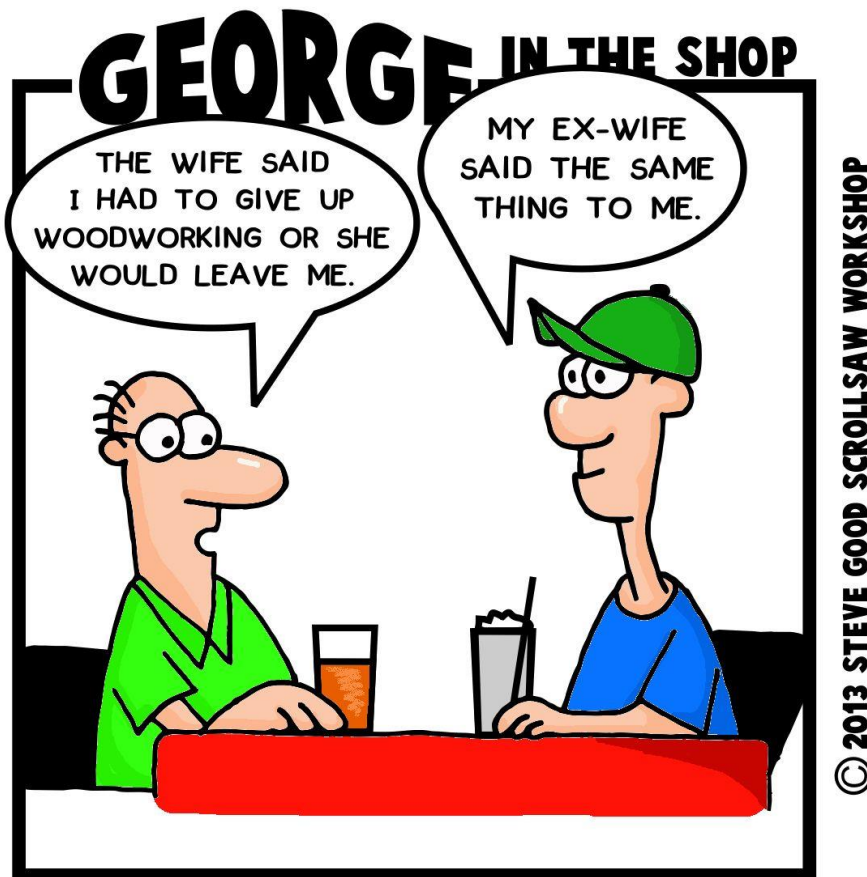
The roller is a length of 1½" electrical conduit. Two hex bolts connect wood end plugs to a pair of side arms that attach to the bench (see detail 'a' above). I used epoxy to secure the roller to the wood disc end plugs after assembling the arm.

Each arm is notched so the roller can be locked in position slightly above the bench top. A nail acts as a pin to lock each arm in place (see detail 'a').

Using the bench roller is easy. Just insert the pin to lock the roller in the up position. Next, set the sheet on 2x4's so it's easy to get a hold of. Then, as you lift the sheet, the roller helps slide it up on the bench. Finally, pull the pin and fold the roller down out of the way.

Good woodworking,

Phil Huber  
Editor, *ShopNotes*



[WWW.SCROLLSAWWORKSHOP.BLOGSPOT.COM](http://WWW.SCROLLSAWWORKSHOP.BLOGSPOT.COM)