

WOOD CHIPS



Northwest Indiana Woodworkers Association
Volume 18, Issue 9 September 2014

President's Corner

Greetings Woodworkers,

Hope you had a nice Labor Day Holiday. The Club's Picnic was a lot of fun. Fred barbequed burgers, brats and hot dogs to perfection! Duane cooked corn, although Russ was afraid he was going to cook the yellow off the ears, they turned out great! All the favorite dishes were brought by the members. Kevin made his famous root beer. Ron and Dick made sure reservations were correct and beverages were cool. Jean Woolard called the "wooden Elephant" Bingo and Ron Benson brought the bag toss game which is always a big hit!

Question: Some members suggested that we have the picnic on Saturday instead of Sunday. This is your club and you need to let the Executive Board know before the end of the year so we can reserve the site.

Thank You Fred Bogwel for teaching us how to make cove molding using the table saw safely. This was amazing.

Toy Distribution is November. Please turn in the names of organizations receiving toys and the number of toys needed.

Indiana Gourd Society Fall Festival is Oct 25 from 9am until 3pm at the Lake County Fairgrounds. If you want to participate there will be applications at the meeting. I will be there selling raffle tickets. If you have any finished cars from Ron, please bring them to the meeting. If you want to volunteer to help, let me know at the meeting.

We were contacted by the Indiana Visitor's Center to see if we want to decorate a Christmas Tree this year. I need volunteers for this. Chairman and committee are needed for this.

As the leaves turn vibrant colors make fine sawdust and stay safe!

Your President
Marcia Lichnerowicz

SHOW AND TELL



Jon Robbins



Bill Schoech



Joe Jurisa



Joe McDaniel



Jesse Day



Frank Berzinis



Dick Sader



Max Hernick



Gene Davis



Kevin Sturgeon



Mike Clark



Ken Garbe



Frank Schmidt



Kevin Sturgeon





ITEMS FOR SALE

If you have any wood working related items that you wish to sell through the newsletter please contact John Hunter john.b.hunter@frontier.com Include a description and the price you are selling them for, also how you may be contacted.

If you are looking for a tool that another member would like to sell you can place a wanted ad in the newsletter, just contact John Hunter at john.b.hunter@frontier.com

CALENDAR OF EVENTS

2014

September 25th Membership Meeting at Hidden Lake 7:00 PM

October 6th Executive Board Meeting at 7 PM at 2949 Willowcreek Rd, Portage,
Gray house on corner. Sign out front says [Family Center]

October 21st Committees Meeting at 2949 Willowcreek Rd, Portage 7:00 PM

October 23rd Membership Meeting at Hidden Lake 7:00 PM

November 18th Committees Meeting at 7:00 PM

November 20th Membership Meeting at Hidden Lake 7:00 PM Toy Program

December 16th Committees Meeting at 2949 Willowcreek Rd, Portage 7:00 PM

December 18th Membership Meeting at Hidden Lake 6:00 PM Christmas Party,
Installation and Awards

Bob Flexner's Finishing Tips

<http://www.thefinishingstore.com/>

TIP: Silicone and Spray Guns

It's widely believed among finishers, especially refinishers, that once you add a fish-eye eliminator to a finish and spray it, your spray gun is forever contaminated. You can't ever get the fish-eye eliminator, which is silicone, completely removed, and little bits of it will continue to break lose and cause fish-eye problems.

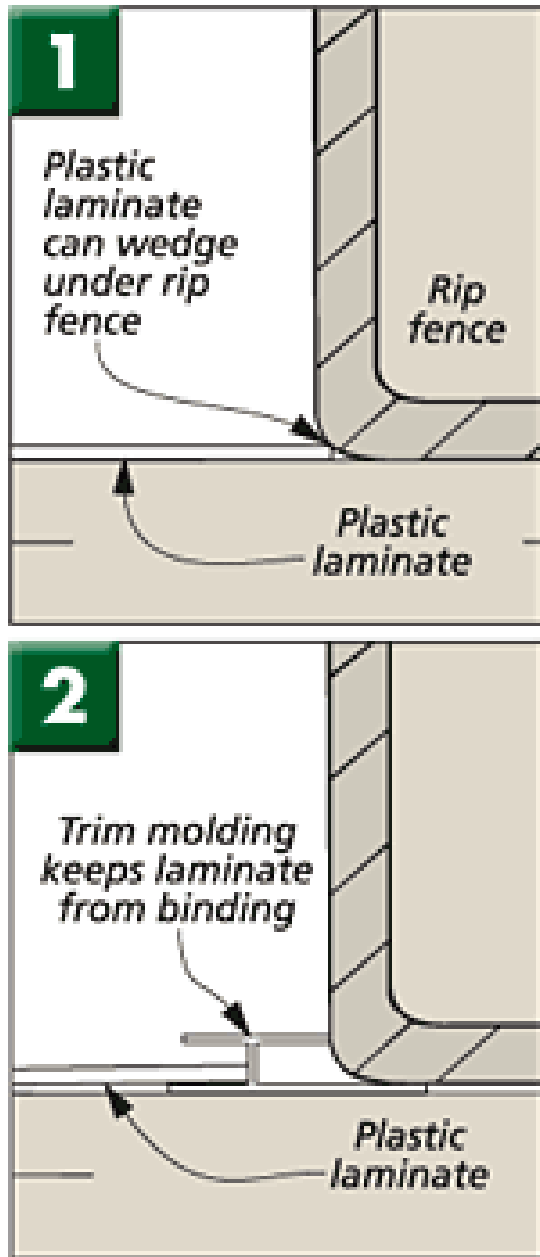
This is not correct and shows a misunderstanding of what silicone actually is. It's simply oil with a very low surface tension. Silicone is noticeably slicker than mineral oil, for example. Rub a drop of whatever brand of fish-eye eliminator you use between your thumb and finger and you'll feel the difference.

So getting silicone, which you might have added to a finish to eliminate fish eye, out of a spray gun is simply a matter of washing the gun well. Usually, you can do this adequately just by sloshing some clean lacquer thinner around in the cup a few times and spraying it out.

The same principle works with a separate pressure pot and hose, though it will require more thinner.

You could also take the cup and gun apart, of course, and clean each part with thinner.

Cutting Laminate



The cure for this problem turned out to be as simple as a trip to the local home center. There I came across some plastic trim molding that makes a perfect edge guide for cutting laminate.



As you can see in the photo, the molding is roughly shaped like an H, with a slightly wider flange on one side. Figure 2 shows how the simple guide works. The wide flange slips under the rip fence to hold molding in place. Then you can use the channel on the opposite side to contain and guide the laminate during the cut. Just be sure to account for the width of the molding when setting the rip fence.

I've found that the easiest way to cut plastic laminate to rough size is to run it through the table saw. But sometimes there's a catch, literally. If you're not careful, the thin laminate can slide under the rip fence and wedge itself tight (*Figure 1*).

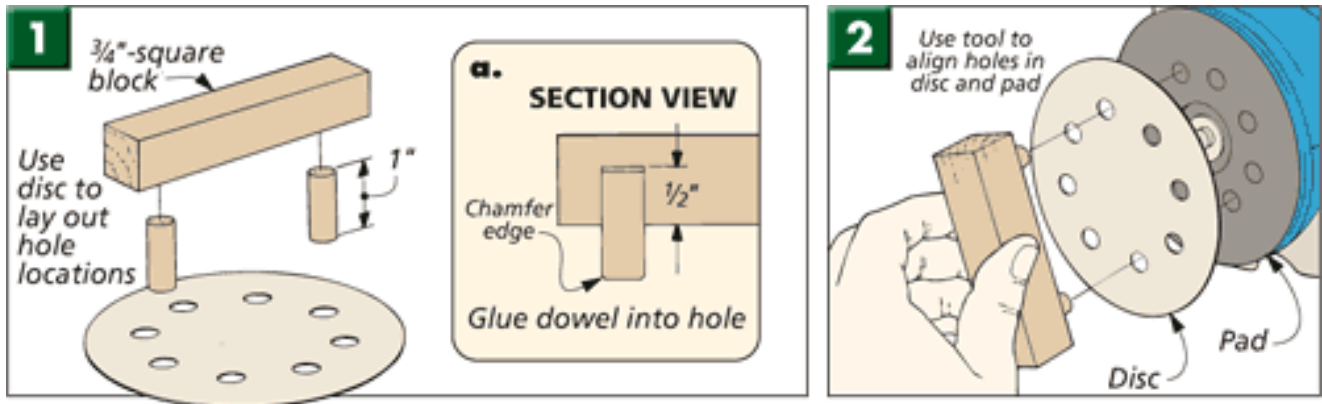
Good Woodworking,

Ted Raife

Online Editor, *Woodsmith*

Sanding Disc Alignment Tool

My oscillating disc sander has built-in dust collection and it works great — but only when the holes in the sanding disc are aligned with the vacuum holes in the sander's pad. And this simple requirement isn't always as easy as it sounds. So rather than rely on a good aim when installing the discs, I put together a simple tool that makes hitting the mark a sure thing.



As you can see in Figure 1, the tool is nothing more than two dowels glued into a small block of wood. The diameter of the dowels and their spacing in the block matches that of the holes in the discs and sanding pad.

To use the tool, you simply place a disc over the dowels and then insert them into the holes in the pad (Figure 2). Slip the disc off of the dowels and onto the pad and you're ready to go.

Good Woodworking,

Ted Raife

Online Editor, *Woodsmith*