

# WOOD CHIPS



Northwest Indiana Woodworkers Association

Volume 30, Issue 6 June 2025

## WOODEN YOU LIKE TO KNOW

Greetings fellow woodworkers,

**IT'S SHOW TIME!**



Our season for project and raffle sales and demonstrations at the tractor shows and the Lake County Fair is now upon us. I have been working diligently in my shop on things to sell and I know that others have also. We have an opportunity to make this a banner year and need all the volunteers that we can get. Please help with donated craft items, selling our raffle tickets and working the booths at the shows. Every item or hour provided by our members helps us to achieve growth in our club. It also pleases me to personally serve this group. Everything that I make, the people that I meet, new members that I can bring in, all give me personal satisfaction and a continuing purpose. I thank you all for all that you do.

Our first show is the South Lake County Agricultural Historical Society Vintage Tractor and Farm Festival July 11-13. If you have any ready to donate items for the clubs sale but cannot attend the show, please bring them to this

meeting and we will collect and deliver them for you. Set-up for the show will be on the 10<sup>th</sup> at 2pm.

#### **NEWS OF NOTE:**

Last month we lost a valued past member of the club. Phil Malavolta passed away last month in Alabama. He was a member for many years until he relocated south and will be dearly missed.

Club member Marcus Meijer has been diagnosed recently with ALS and has elected to retire from our group for the foreseeable future. Marcus has been a great asset for us, and his art of model ship building was a tremendous attraction at the shows. We wish the best for him.

#### **REMINDERS:**

This month's meeting will be on June 26th @ 6 pm at Hobart Moose

See you at the next meeting,  
Jeff Snellgrove  
President NIWA

### **VP CORNER**

Our group toy build is going well, and we currently have 370 toys in various stages of production and inspection. There is still a need for participation and all those that have participated, I thank you. You will be recognized in future meetings. I see the need for a late August toy build to finish up loose ends and begin installing wheels. Keep in mind we will have only 3 months to finish our toys once August rolls around. Those of you who make toys please begin reporting your counts to Bill Schoech. I will announce group toy build dates in the August meeting.

George Denton

### **FROM THE TREASURY**

#### **Money talks**

*Do the Dues.* A reminder that we run on a fiscal year from May-April. Dues are \$25 for single membership and \$35 for a couple for FY 2025-2026. Please make sure you pay your dues. This helps keep our great club running year after year. I will start sending emails directed to delinquent members after our June meeting.

**2025-2026 Budget.** The board has approved our new budget. We have increased our estimated spending by 2% or \$105 over last year's budget. Based on our income and expenses from our last FY, we are doing quite well.

**Important Reminder.** We can now accept credit card payments for everything except 50/50 and raffle ticket sales. (*State law*). What that means for the club is we now have the option of paying your dues with a credit card. While we will be adding a small service fee to this service, we will be waving that fee for dues.

This will also give us the ability to sell products and accept donations at events and using credit cards. We will be charging a small flat fee per transaction for this convenience. We believe that this new capability will boost our sales at our events.

As we move forward throughout the year, we will be looking for more opportunities to increase our financial stability along with our ability to increase our membership. We welcome any ideas which will help us in this endeavor. If you have any questions or ideas, please let me know. I now have a new email address which can be used for any communications to the treasurer's office. [Treasurer.niwa@gmail.com](mailto:Treasurer.niwa@gmail.com).

## SHOW AND TELL



George Denton



Jeff Snellgrove





**Gene Davis**



**Al Brown**



**Bryan Pelonis**



**George Denton**





**Bill Schoech**



**Don Williams**



**Kevin Sturgeon**

## ITEMS FOR SALE

If you have any wood working related items that you wish to sell through the newsletter please contact John Hunter [john.b.hunter@frontier.com](mailto:john.b.hunter@frontier.com) Include a description and the price you are selling them for, also how you may be contacted.

If you are looking for a tool that another member would like to sell you can place a wanted ad in the newsletter, just contact John Hunter at [john.b.hunter@frontier.com](mailto:john.b.hunter@frontier.com)

## 2025

June 26<sup>th</sup> Membership Meeting at Moose Lodge, 143 South Hobart Road, Hobart IN  
6:00 PM

July 7<sup>th</sup> Executive Board Meeting 5 PM at Portage Moose Lodge on County Line Road

July 10<sup>th</sup> Set Up Club Booth at Steam Show 3 PM at Lake County Fair Grounds

July 11<sup>th</sup> – 13<sup>th</sup> Club Booth at the Steam Show at Lake County Fair Grounds

July 16<sup>th</sup> Committees Meeting at Moose Lodge, 143 South Hobart Road, Hobart IN  
6:00 PM

July 24<sup>th</sup> Membership Meeting at Moose Lodge, 143 South Hobart Road, Hobart IN  
6:00 PM

July 31<sup>st</sup> Set up booth for Lake County Fair **Time to be announced**

August 1<sup>st</sup> – 4<sup>th</sup> Work booth at Lake County Fair

August 20<sup>th</sup> Committees Meeting at Moose Lodge, 143 South Hobart Road, Hobart IN  
6:00 PM

August 28<sup>th</sup> Membership Meeting at Moose Lodge, 143 South Hobart Road, Hobart IN  
6:00 PM

August 31<sup>st</sup> Club Picnic at the Portage VFW at 2803 Monnier St. In Portage IN  
12:00 Noon

September 17<sup>th</sup> Committees Meeting at Moose Lodge, 143 South Hobart Road, Hobart IN  
6:00 PM

September 25<sup>th</sup> Setup booth for Fall Harvest Festival And Antique Equipment Show

September 26<sup>th</sup> – 28<sup>th</sup> Work both at Harvest Festival and Equipment Show 9:00 AM – 5:00 PM

September 25<sup>th</sup> Membership Meeting at Moose Lodge, 143 South Hobart Road, Hobart IN  
6:00 PM Program Favorite/Least Favorite tools & Silent Auction

October 6<sup>th</sup> Executive Board Meeting 5 PM at Portage Moose Lodge on County Line Road

October 15<sup>th</sup> Committees Meeting at Moose Lodge, 143 South Hobart Road, Hobart IN  
6:00 PM

October 23<sup>rd</sup> Membership Meeting at Moose Lodge, 143 South Hobart Road, Hobart IN  
6:00 PM

November 12<sup>th</sup> Committees Meeting at Moose Lodge, 143 South Hobart Road, Hobart IN  
6:00 PM

November 20<sup>th</sup> Membership Meeting at Moose Lodge, 143 South Hobart Road, Hobart IN  
6:00 PM Toy Program

December 10<sup>th</sup> Committees Meeting at Moose Lodge, 143 South Hobart Road, Hobart IN  
6:00 PM

December 18<sup>th</sup> Membership Meeting at Moose Lodge, 143 South Hobart Road, Hobart IN  
6:00 PM Christmas Party, Installation and Awards



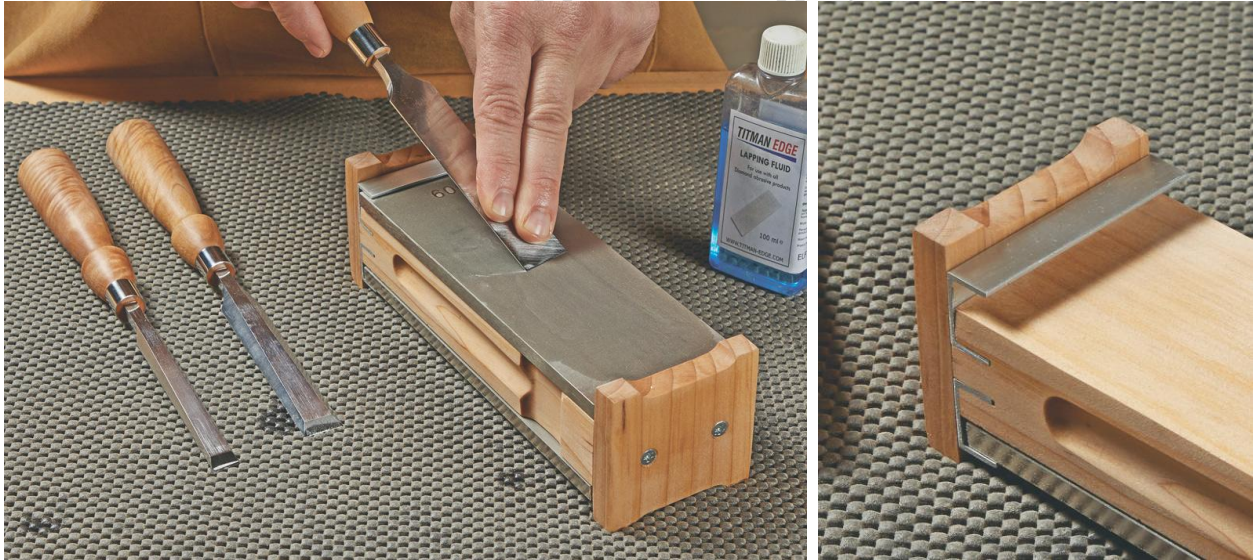
## WOODWORKING TIPS

### Compact Sharpening Holder

By: *Erich Lage & Rob Petrie*

#### **Keep Your Diamond Sharpening Plates Gathered and Close at Hand**

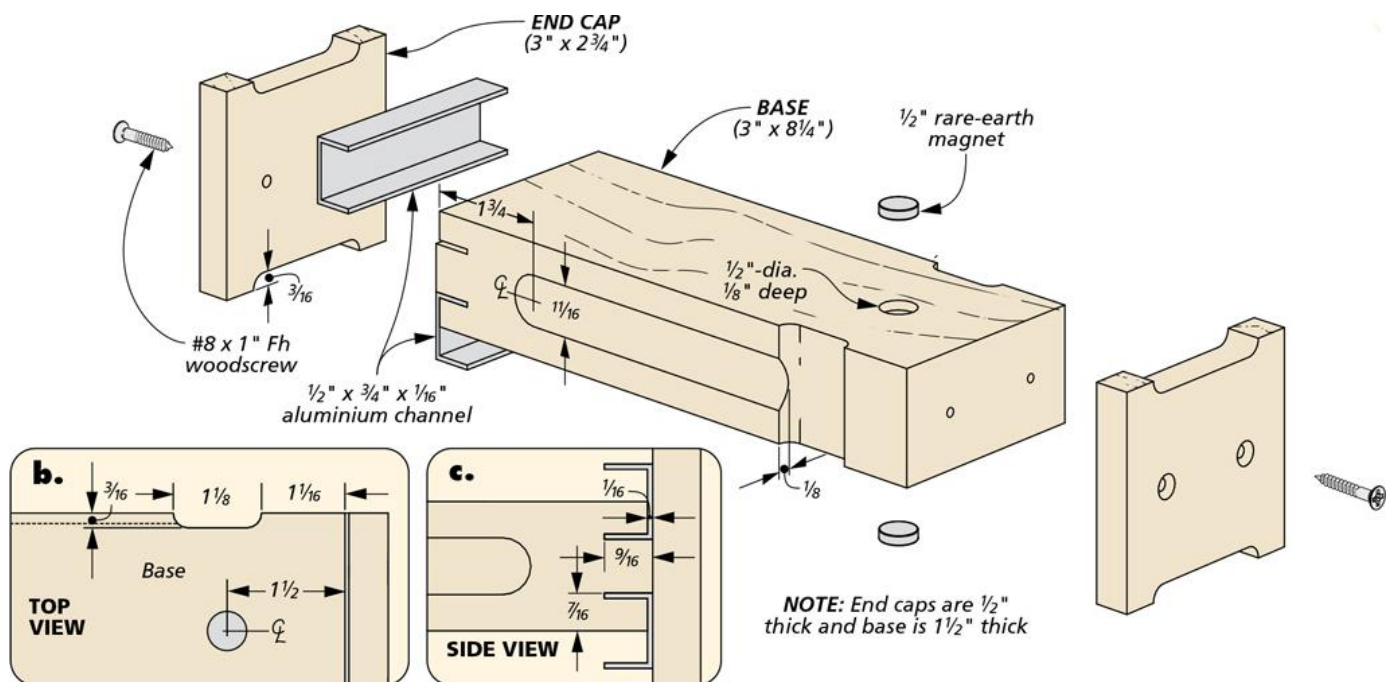
My woodshop is rather small, so I'm always looking for ways to save storage space. One such way is this compact holder, made for two diamond sharpening plates. Now I have four sharpening surfaces in a single block. This holder makes it quick and easy to switch sharpening surfaces for whatever I need, and the holder itself has the same footprint as just one plate. Aluminum channels keep plates from slipping (below)



Counterbored magnets keep plates secure in the holder



The plates are held by aluminum channels on one end and secured by a rare-earth magnet counterbored into the base, as you can see in the photos above.



I used my band saw with the fence to cut the kerfs that fit one lip of each channel (detail 'c'). I slightly recessed each side of the kerf on the table saw so the end caps could be screwed flush to the base. I used a 1" core box bit to create notches for finger grips in the side. I also routed a recess in the top and bottom of each end cap, as well as on the side of the base (detail 'b').

