

WOOD CHIPS



Northwest Indiana Woodworkers Association

Volume 29, Issue 9 September 2024

WOODEN YOU LIKE TO KNOW

Greetings fellow woodworkers,

Well, September is coming to a close and the fall season is rapidly approaching. It is now that many of us try to make the most of our available shop time. I have certainly been busy in mine lately, making items to donate and sell at the upcoming Fall Harvest show, raffle pens, weddings gifts and Christmas presents. Lately my grass is too dry to need cutting much anyway.

As most of you know Ron Benson will be retiring from his job as treasurer of the club soon and we thank him for his many years of service. At last month's meeting, Dennis Byron volunteered to step in as Ron's replacement and he was accepted by a vote of the Executive board. Thank you Dennis. I am looking forward to working with you as I did Ron. Ron will continue to serve in his other capacities.

We recently received a nice thank you letter from the Lake County Historical Society thanking us for our participation in their show this year and inviting us to return next year.

Our club picnic was August 25h. We had a great turnout and I believe that everyone enjoyed themselves. A fantastic job was done by Dick Sader, his crew and all that helped out. Austin Bonta, the mayor of Portage was invited and attended. It was nice to meet him and we appreciate his presence.

On September 14th we went to the Porter County Historical Museum for their exhibit on local woodworking. It was very interesting. If you couldn't make it on that day, you should certainly try to check it out when you can before it is gone. Thanks to those that attended.

REMINDERS:

This month's meeting will be on September 26th. 7 pm at the Hobart Moose.

This month's program will be our annual silent auction. If you have items to sell, please bring them in and be sure to bring some cash if you are looking to buy. We will also have a presentation at the beginning of the meeting by Tim Ault from Von Tobels.

The final show opportunity of the year will be the Sunset Hill Harvest Festival September 27-29. We need donated items to sell and raffle sale pens made again. Setup for the show will be on September 26th at 2:00 pm. Please come and help and drop off your donated items to be sold.

Also, keep our toy program in mind, if you are considering submitting a group this year to receive toys (and please do if you know of a need), it helps our committee to have an approximate count of the number required as soon as possible.

See you at the next meeting,
Jeff Snellgrove
President NIWA

SHOW AND TELL



Don Miller



Bryant Mitol



Dennis Byron



Bill Schoech



Norm Johnson



George Denton



Rodney Foster

ITEMS FOR SALE

If you have any wood working related items that you wish to sell through the newsletter please contact John Hunter john.b.hunter@frontier.com Include a description and the price you are selling them for, also how you may be contacted.

If you are looking for a tool that another member would like to sell you can place a wanted ad in the newsletter, just contact John Hunter at john.b.hunter@frontier.com

2024

September 26 Setup booth for Fall Harvest Festival And Antique Equipment Show 2:00 PM

September 26th Membership Meeting at Moose Lodge, 143 South Hobart Road, Hobart IN

7:00 PM Program Favorite/Least Favorite tools & Silent Auction

September 27th-29th Club Booth at Fall Harvest Festival And Antique Equipment Show

9:00 – 5:00

October 2nd Executive Board Meeting 5 PM at Portage Moose Lodge on County Line Road

October 16th Committees Meeting at Moose Lodge, 143 South Hobart Road, Hobart IN

7:00 PM

October 24th Membership Meeting at Moose Lodge, 143 South Hobart Road, Hobart IN

7:00 PM

November 6th Committees Meeting at Moose Lodge, 143 South Hobart Road, Hobart IN

7:00 PM

November 16th Membership Meeting at Moose Lodge, 143 South Hobart Road, Hobart IN

7:00 PM Toy Program

December 4th Committees Meeting at Moose Lodge, 143 South Hobart Road, Hobart IN

7:00 PM

December 12th Membership Meeting at Moose Lodge, 143 South Hobart Road, Hobart IN

6:00 PM Christmas Party, Installation and Awards

Hardware Storage

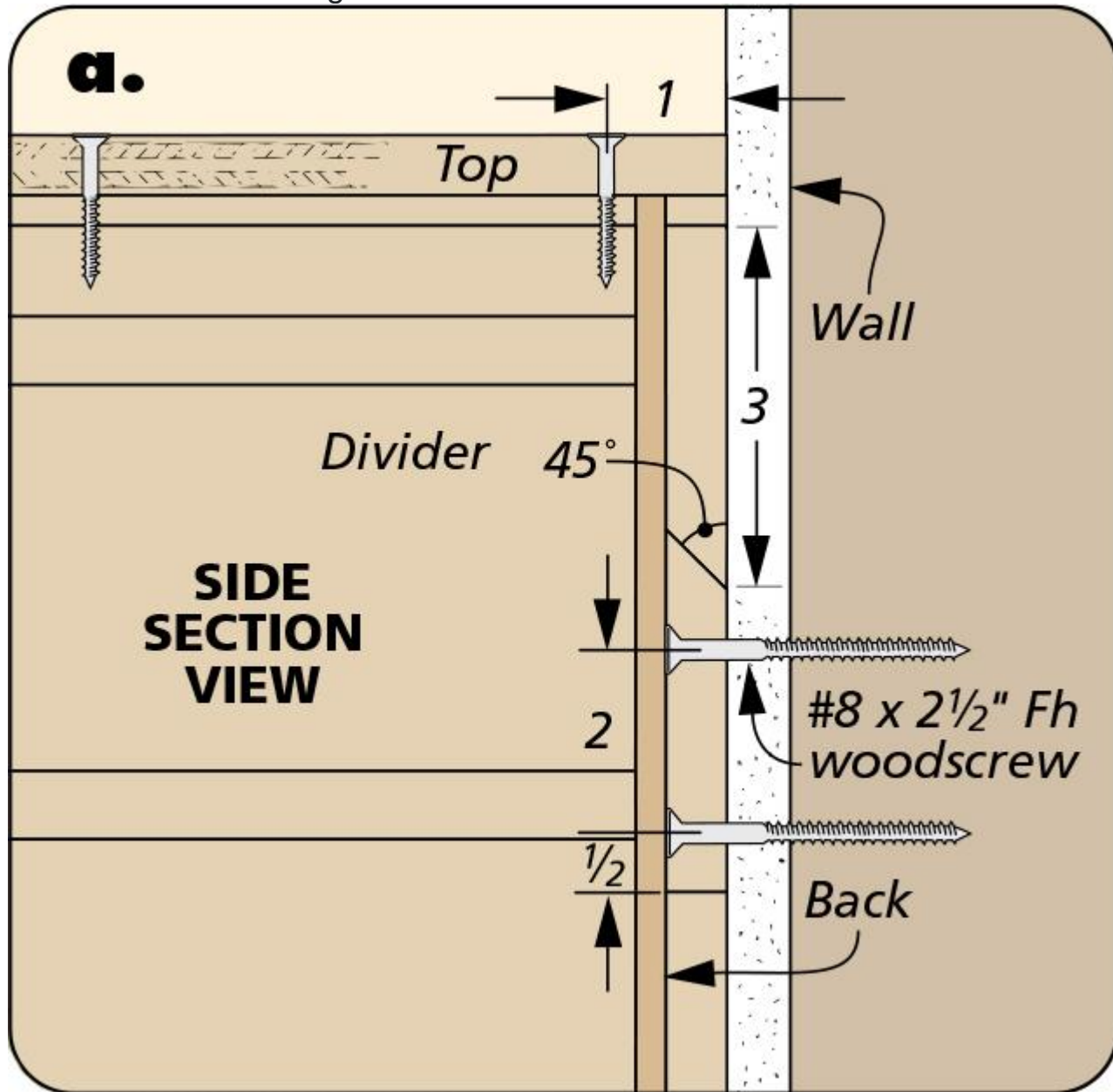
By: Erich Lage & Logan Wittmer

Keep the Hardware You Need Organized and Close at Hand



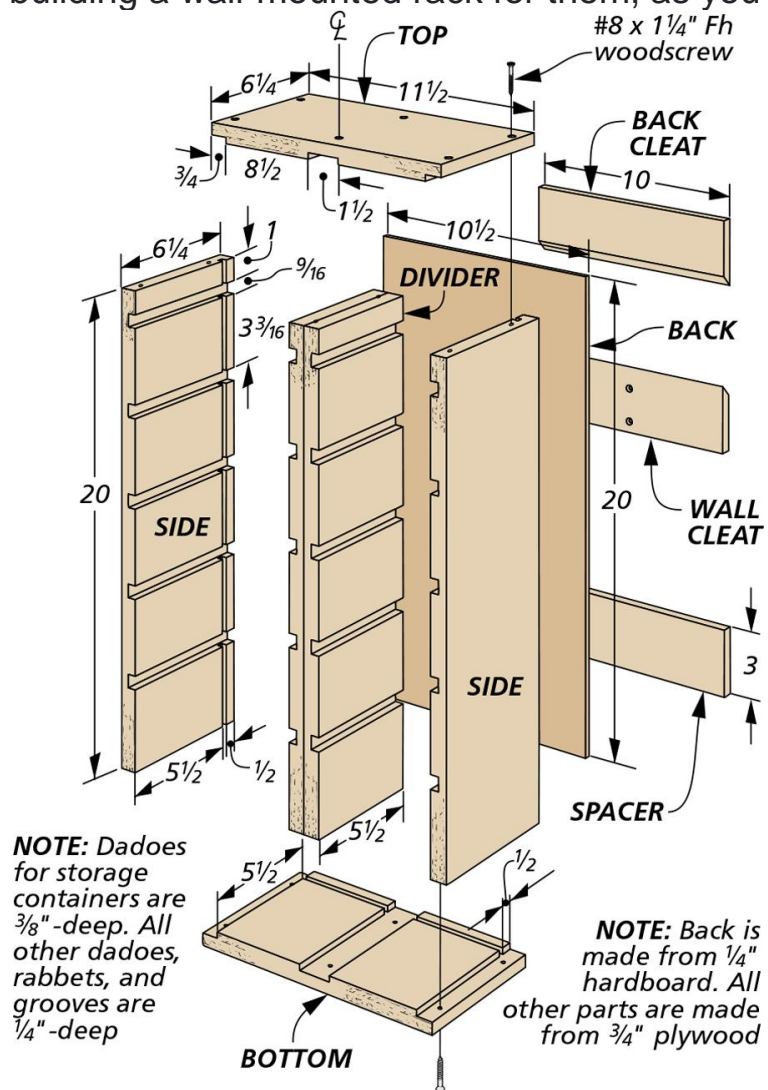
In my shop, I usually keep certain types of hardware on hand. This means buying large bags of hardware at the home center. Once you've opened the bag however, storing the

remaining pieces can be a pain. That was, until I opened my fridge one day and the solution was staring me in the face.



Storage Containers. The solution, I found, came in the form of plastic food containers. They come in a variety of sizes and are often inexpensive. And, while they stack fairly well, I found that I was able to stay much more organized by

building a wall-mounted rack for them, as you see above.



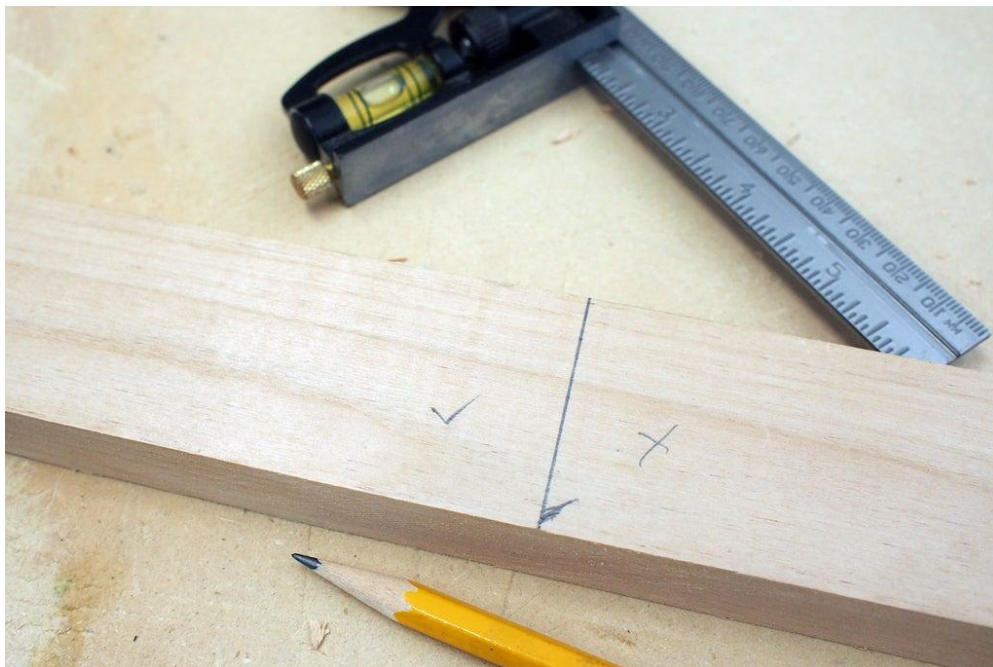
The details needed for building it can be found in the drawing above.

Marking Cut Lines



When measuring material to be cut I find it helpful to put a little tick mark of the side to cut on. This simple action saves countless time remeasuring and helps me account for kerf, the thickness of the blade you are cutting with.

Kerf is the divergence between the left and right sides of the saw teeth, and any cutting will result in some loss of wood that is turned into sawdust. If you just cut directly on the marked line the blade kerf would eat into your measured piece, causing your cut to be inaccurate. This may not seem like a big deal, but if you've ever had a project be a 1/8" out of measurement you know how frustrating this can be.



The solution is to measure your piece and make a small tick to one side of the measured line, indicated which side to cut on. Once measured, line your blade up to the line with the blade on the ticked side, so that the kerf will be on one side of the line and not into your measured area. If you ever work with a buddy and are dividing labor this is a great trick to keep each other informed of the areas to cut.

I use this every time I mark cut lines, and it's a great habit to fall into.